

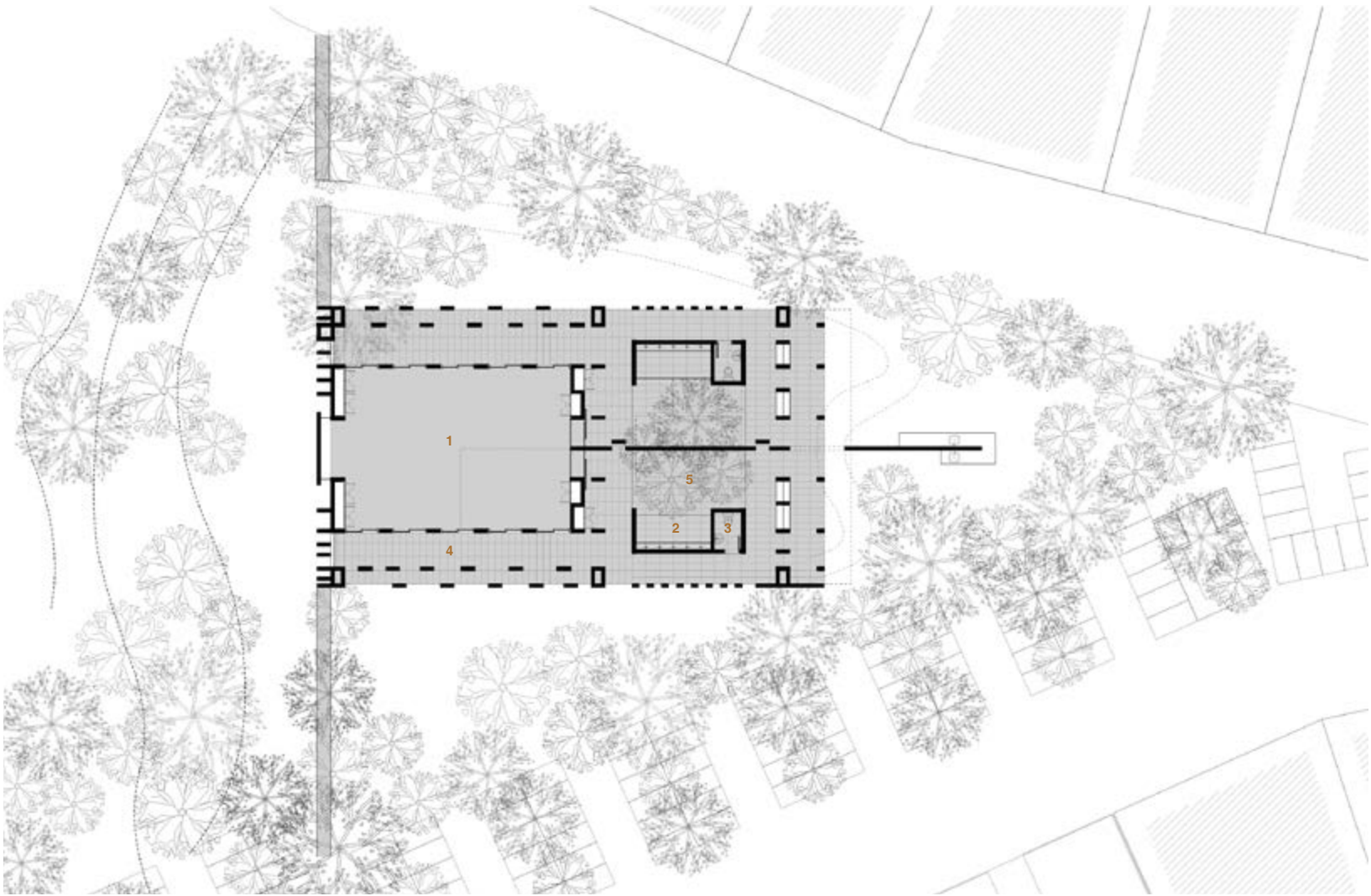
Surau Ali Bashah NeocyberCyberjaya, Malaysia
2008 - 2012

Surau Ali Bashah is located at the central gardens of Neocyber, a 21 acre mixed-used development. Serving this community of office workers, shoppers and residents, Surau Ali Bashah seeks to provide a dignified and peaceful place for worship and prayer.

Conceived as an eloquent and simple shelter within a garden, the plan is a composition of uni-directional walls. The walls vary in length to enclose and create spaces, form stores, create openings, whilst sometimes dissolving into layered screens.

This simplicity in plan is reflected in the representation of the building. Materials employed are brick & plaster, stripped away of all adornments or components, where fenestrations are mere gaps in walls, providing a facade which responds to where openings or privacy are required. A symbolic minaret marks its intended use as a place of worship, refuge and activity centre for the Muslim community around.

Laketown Sdn. Bhd.
RM 0.43 mil
259 sq.mPAM Awards 2013
Public and Institutional Buildings
*Commendation*M&E Consultant
MEP Engineering Sdn Bhd
C&S Consultant
JPS Consulting Engineers Sdn Bhd
QS Consultant
YSCA Consultancy Sdn Bhd
Landscape
Wholistic Landscape Architecture Sdn Bhd
Main Contractor
Fairway Terrace Construction Sdn BhdSURAU
ALIBASHAH
NEOCYBER



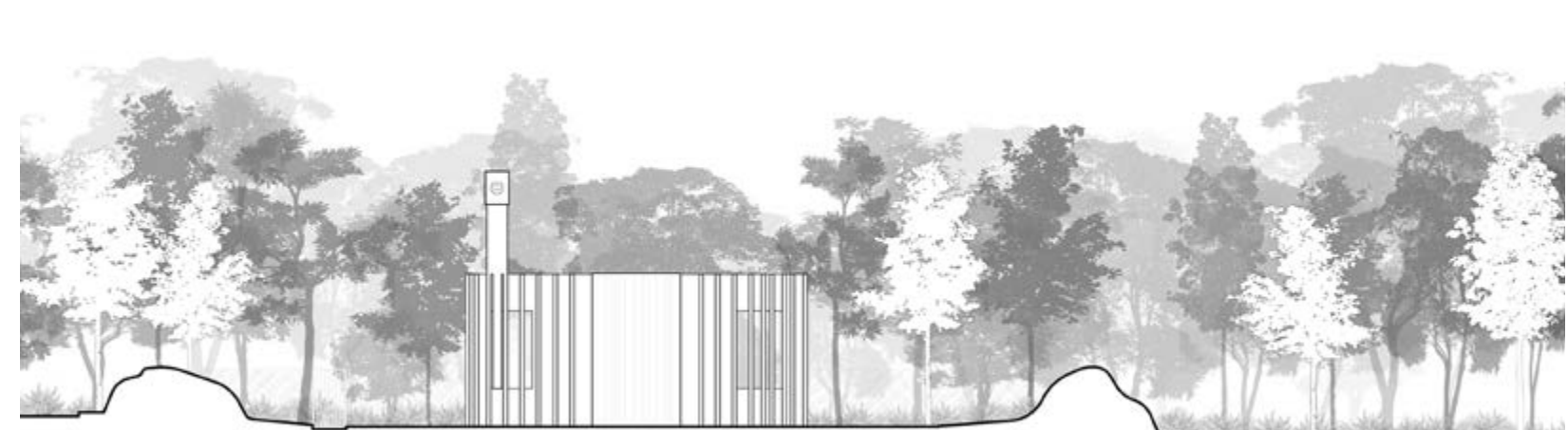
- 1 Praying hall
- 2 Ablution area
- 3 Toilet
- 4 Walkway
- 5 Courtyard

“ The rhythmic arrangement of its undirectional wall manages somehow to evoke feelings of calm and serenity that’s in keeping with a place of prayer and worship. ”

Sc Murugasu
 Writer of Breaking the Mould
 FocusM Benchmark
 Sept 7 - 13 2013



South West Elevation



North West Elevation

