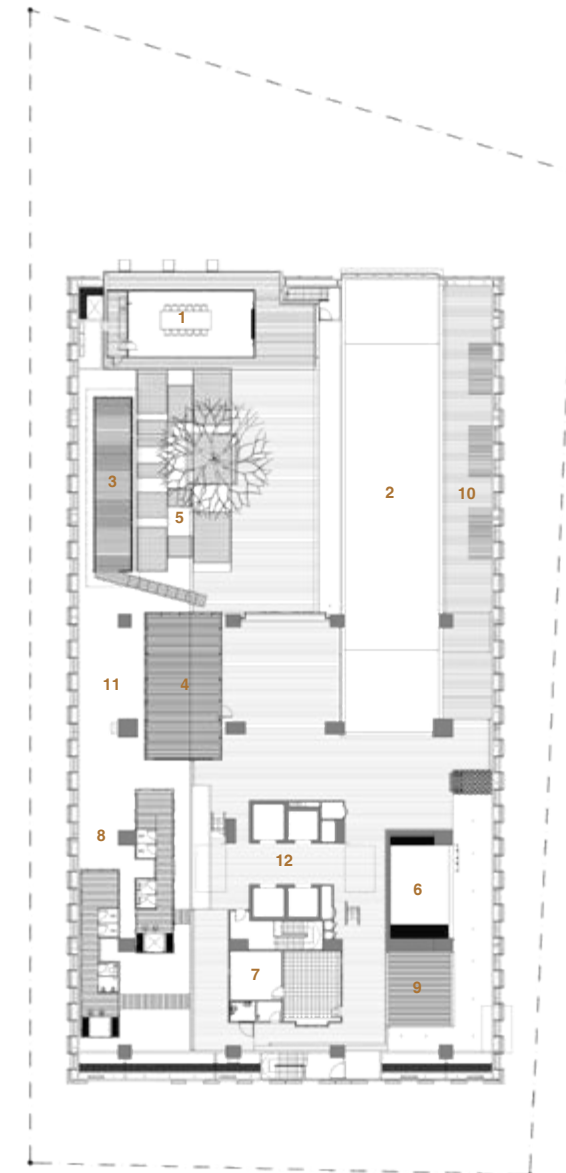


SIX CEYLON



- 1 Dining Room
- 2 Swimming Pool
- 3 Pavilion
- 4 Gym
- 5 Floating Planter
- 6 Wadding Pool
- 7 Management Office
- 8 Changing Room
- 9 Play Area
- 10 Pool Deck
- 11 Water Feature
- 12 Lift Lobby



sixceylon

Kuala Lumpur, Malaysia
2008 - 2014

A 33-storey service apartment building which comprises 215 units of compact and comfortable residences which take advantage of the vistas and quiet location in Bukit Ceylon. The apartments range from 558 to 1,555 sq. ft in size, offering accommodation of one to three bedrooms. All the residents' amenities are located in the podium room, interspersed with waterscaped gardens and decks. North-south orientation and double-layered facade minimise heat gain.

The outer layer comprises a series of lightweight patterned screens that provide sixceylon with its distinctive signature.

Symphony Life Bhd
RM 95 mil
41,720 sq.m

Asia Pacific Property Awards 2012
*Best Residential Renovation /
Redevelopment in Asia Pacific*

M&E Consultant
AD Consult Sdn Bhd
C&S Consultant
SKM Engineering Sdn Bhd
QS Consultant
Baharuddin Ali + Low Sdn Bhd
Landscape
Inchscape
Main Contractor
Al-Ambia Sdn Bhd

