



THE
MANSIONS

—

The entrance statement dramatically celebrates the site geology & geography, whilst elegantly addressing engineering needs for slope protection works.

—

The
MANSIONS

The Mansions

Kuala Lumpur, Malaysia

2010 - 2014

This development comprises 137 2½ to 3½-storey strata homes within a gated and landscaped compound with a clubhouse, pool and other common amenities. The master layout plan was conceived to foster the ideals of community living and place making. The central spine of the development is punctuated by a pool which becomes the focal point for the entire community. The residences are vibrant, light filled and airy spaces with distinct public and private zones.

FIABCI - World Property Award 2016
Residential (Low Rise) Category
Gold Medal Winner

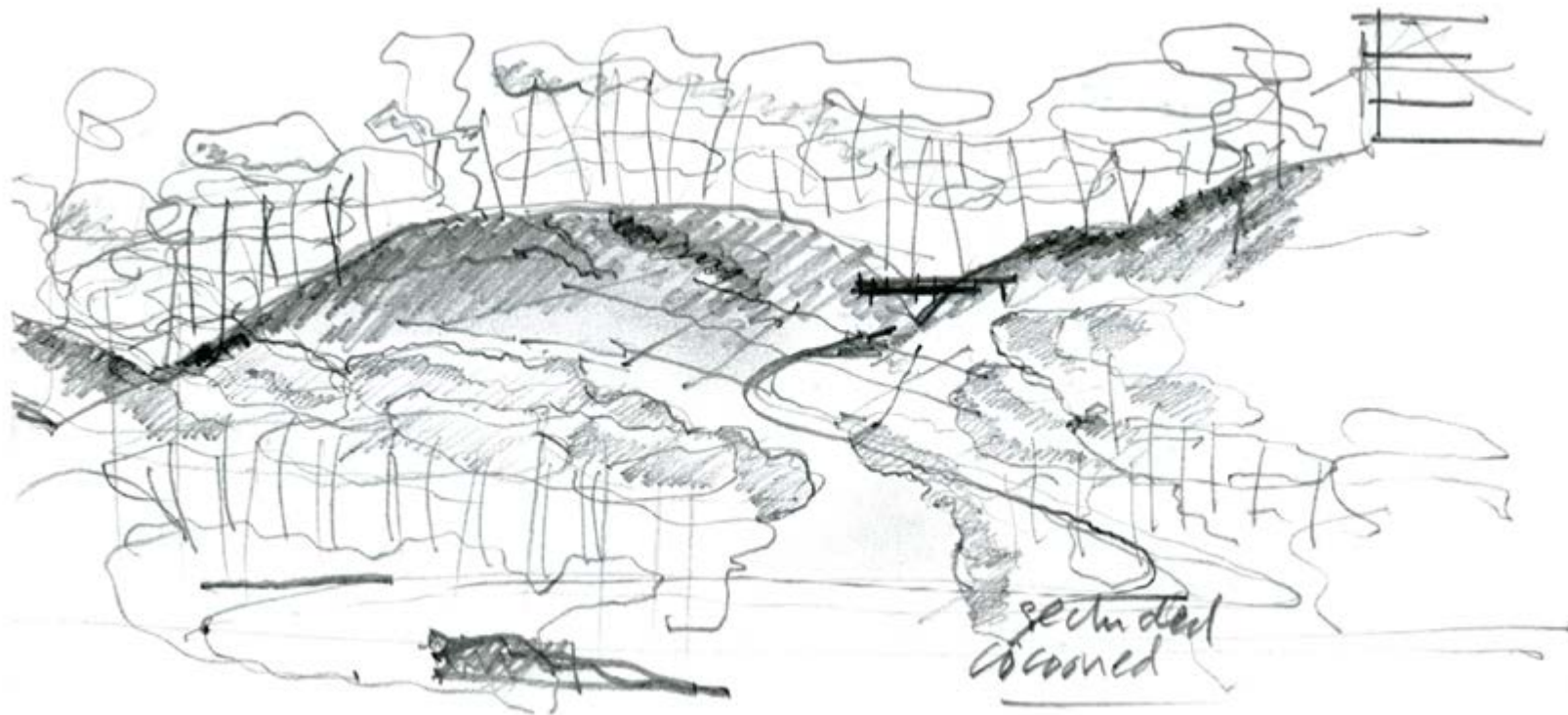
FIABCI - Malaysia Property Award 2015
Residential (Low Rise) Category
Winner

Perdana Parkcity Sdn Bhd
RM 196 mil
9,595 sq.m

M&E Consultant
Perunding Mektrik Sdn Bhd
C&S Consultant
G&P Structures Sdn Bhd
QS Consultant
KPK Quantity Surveyors (Sem.) Sdn Bhd
Landscape
Praxis Design Sdn Bhd
Main Contractor
Malinta Corporation Sdn Bhd

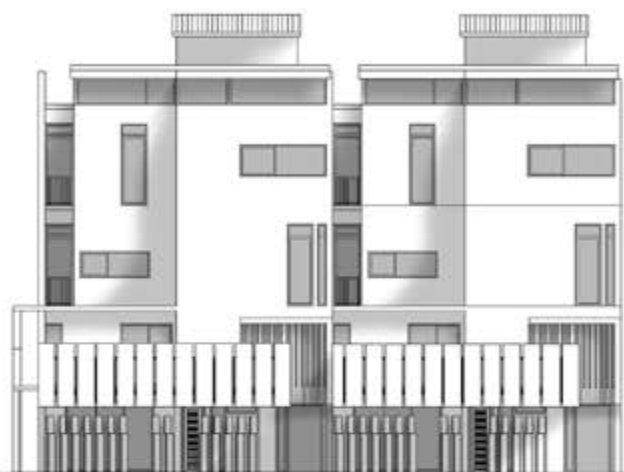
- 1 Entrance Sculpture
- 2 Natural Rock Outcrop
- 3 Security Forecourt on cantilevered edge
- 4 Clubhouse drop-off
- 5 Management office
- 6 Surau
- 7 Kindergarten
- 8 Kids play area
- 9 Open field
- 10 Changing room
- 11 Multi purpose hall
- 12 Wading pool
- 13 Infinity edge pool overlooking valley/klcc
- 14 Suspended bridge crossing
- 15 Gym



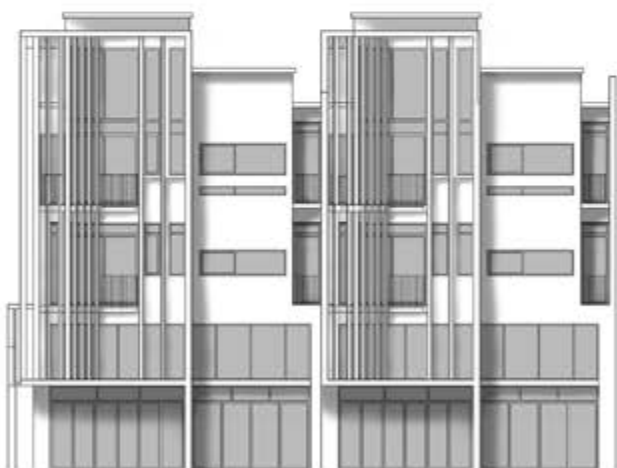


“ We started with a conviction to revive a dust bowl with an imaginative signature development. We looked at how the land, hostile yet unique, can be honoured, reworked and repurposed as a fine place of fine homes and provide lasting beauty and hospitable sustenance. ”

Mr Lee Lam Chye
CEO Perdana ParkCity Sdn Bhd
The Star, 7 Nov 2015



Front Elevation Type A



Rear Elevation Type A

