



# THE BREEZEWAY



—  
Crafting the necessary  
to the sublime  
concrete tie beams  
are turned on its side  
to serve as brise-soleil  
whilst the fire escape  
stairs finds playful  
expression in the 5  
storey void.  
—







CITYSCAPE  
AWARDS  
2017



**The Breezeway**  
Kuala Lumpur, Malaysia  
2010 - 2014

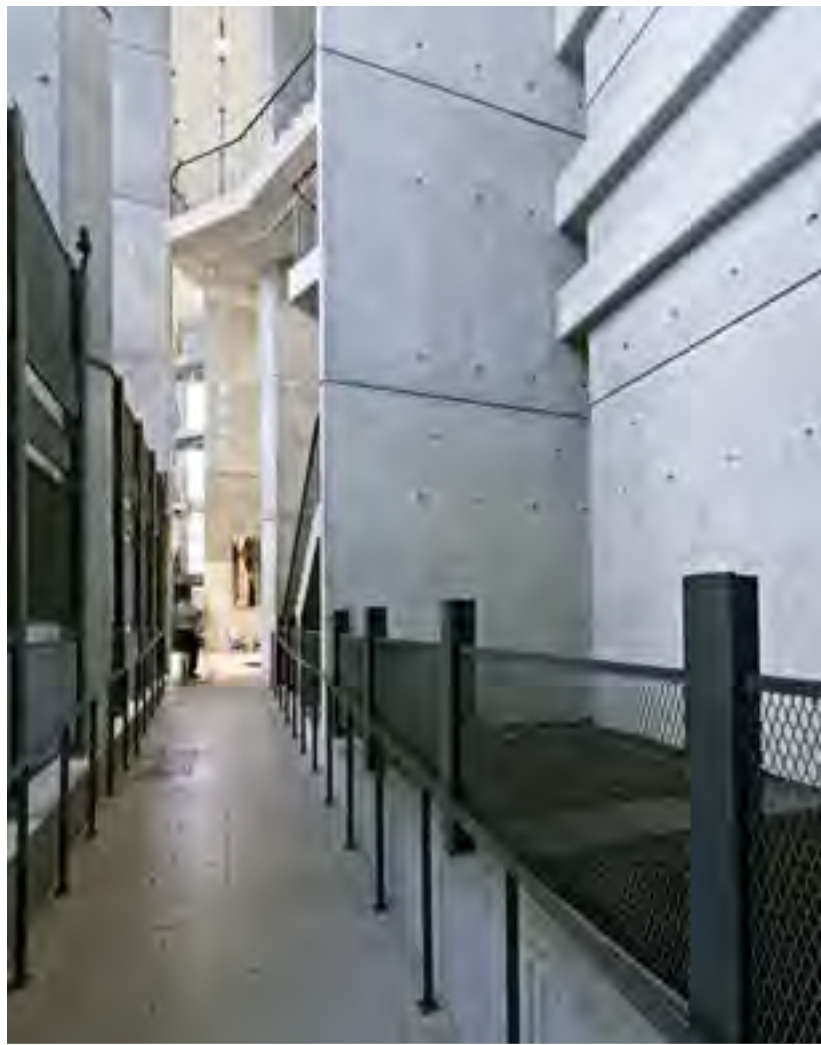
The Breezeway is a stratified residential development comprising of 76 low-rise parkhomes and 139 apartment units. Recreational facilities are located on top of the tower podium. A series of linear courts and gardens provide easy and pleasant connections throughout the site.

Perdana ParkCity Sdn. Bhd.  
RM 159 mil  
61,018 sq.m

Cityscape Awards for Emerging Markets 2017  
Residential - Medium to High Rise Project (Built)  
*Shortlisted*

M&E Consultant  
Perunding Mektrik Sdn Bhd  
C&S Consultant  
TDC Engineering Consultants Sdn Bhd  
QS Consultant  
KPK Quantity Surveyors (Sem.) Sdn Bhd  
Landscape  
Praxcis Design Sdn Bhd  
Main Contractor  
Putra Perdana Construction Sdn Bhd





“ Interesting use  
of raw materials  
and variations in  
fenestrations create a  
pleasant outcome in  
coherence with the  
bold statements in  
the design. ”

**Jurors**  
of PAM Awards 2015







- 1 Gardens
- 2 Rainshelter Walkway
- 3 3-storey low-rise parkhomes in the garden
- 4 22-storey high-rise fronting the ParkCity Towncentre
- 5 Facilities deck and car parks
- 6 Forecourt to the Central Park
- 7 Forecourt to the ParkCity Towncentre



